

# Captain's Fasteners

Stainless Steel



## COMPANY OVERVIEW

**Corporate Objectives:** To offer our Customers the highest quality products available at affordable prices, while providing a high standard of customer care. Our goal is to establish long term business relationships with our Customers.

**Experience:** Over 30 years Importing and Exporting Non-Ferrous Fasteners Worldwide.

**Materials:** Stainless Steel, Brass, Silicon Bronze, Monel, Titanium and Nylon.

**Key Distribution Sectors:** Marine, Industrial, Construction, Architectural, Oil and Food Industries.

**Inventory:** Over 3,000 tons in Stock

**Management:** Highly skilled sales team inside and outside.

*CAPTAIN'S FASTENERS CORP*

## PERFIL DE LA EMPRESA

**Objetivos Corporativos:** Ofrecer a nuestros clientes productos de la más alta calidad con precios competitivos, proporcionando una atención de alto nivel. Nuestra meta es establecer relaciones comerciales a largo plazo con nuestros clientes.

**Experiencia:** Más de 30 años Importando y Exportando Tornillos No Ferrosos a nivel mundial.

**Materiales:** Acero Inoxidable, Latón, Bronce Silicio, Monel, Titanio y Nylon.

**Sectores de Distribución:** Marino, Industrial, Construcción, Arquitectura, Petrolero y Alimenticio.

**Inventario:** Mas de 3.000 toneladas en stock.

**Staff:** Equipo de Ventas altamente calificado nacional e internacionalmente.

*CAPTAIN'S FASTENERS CORP*

# Captain`s Fasteners

Superiority in Stainless Steel / Superioridad en Acero Inoxidable



## Stainless Steel / Hexagon Head Cap Screws Acero Inoxidable / Tornillos Hexagonales

### 3000 Model



18-8 STAINLESS STEEL, HEXAGON HEAD CAP SCREWS,  
COARSE THREAD / UNC  
18-8 Acero Inoxidable, Tornillos Hexagonales,  
Rosca Gruesa / UNC

### Model 3018



18-8 STAINLESS STEEL, HEXAGON HEAD CAP SCREWS  
FULL THREAD / TAP BOLTS, COARSE THREAD / UNC  
18-8 Acero Inoxidable, Tornillos Hexagonales,  
Rosca Corrida & Gruesa / UNC

### 3020 Model



304 STAINLESS STEEL, HEAVY HEXAGON HEAD BOLTS,  
ASTM A193 B8  
304 Acero Inoxidable, Tornillos Hexagonales Estructurales,  
ASTM A193 B8, Rosca Gruesa / UNC

### Model 3024



18-8 STAINLESS STEEL, HEXAGON HEAD CAP SCREWS,  
Fine Thread / UNF  
18-8 Acero Inoxidable, Tornillos Hexagonales,  
Rosca Fina / UNF

### 3700 Model



316 STAINLESS STEEL, HEXAGON HEAD CAP SCREWS,  
COARSE THREAD / UNC  
316 Acero Inoxidable, Tornillos Hexagonales,  
Rosca Gruesa / UNC

### Model 3705



316 STAINLESS STEEL, HEAVY HEXAGON HEAD BOLTS,  
ASTM A193 B8M  
316 Acero Inoxidable, Tornillos Hexagonales Estructurales,  
Norma ASTM A193 B8M

### 3708 Model



316 STAINLESS STEEL, HEXAGON HEAD CAP SCREWS,  
FINE THREAD / UNF  
316 Acero Inoxidable, Tornillos Hexagonales,  
Rosca Fina / UNF

### Model 3900



410 STAINLESS STEEL, HEXAGON HEAD CAP SCREWS,  
COARSE THREAD / UNC  
410 Acero Inoxidable, Tornillos Hexagonales,  
Rosca Gruesa / UNC

### 4500 Model



A2 ( 304 ) STAINLESS STEEL, DIN 933 HEXAGON HEAD  
CAP SCREWS, FULL THREAD  
A2 ( 304 ) Acero Inoxidable, Tornillos Hexagonales,  
DIN 933, Rosca Corrida & Gruesa

### Model 4511



A2 ( 304 ) STAINLESS STEEL, DIN 931 HEX HEAD CAP  
SCREWS, PARTIAL THREAD  
A2 ( 304 ) Acero Inoxidable, Tornillos Hexagonales,  
DIN 931, Rosca Parcial & Gruesa

### 4800 Model



A4 ( 316 ) STAINLESS STEEL, DIN 933 HEX HEAD CA  
SCREWS, FULL THREAD  
A4 ( 316 ) Acero Inoxidable, Tornillos Hexagonales,  
DIN 933, Rosca Corrida & Gruesa

### Model 4811



A4 ( 316 ) STAINLESS STEEL, DIN 931 HEX HEAD CAP  
SCREWS, PARTIAL THREAD  
A4 ( 316 ) Acero Inoxidable, Tornillos Hexagonales,  
DIN 931, Rosca Parcial & Gruesa

## Stainless Steel / Carriage & Elevator Bolts

Acero Inoxidable / Tornillos Carruajes & Elevadores

### 3040 Model



18-8 STAINLESS STEEL, SQUARE NECK CARRIAGE BOLTS,  
FULL & COARSE THREAD / UNC  
18-8 Acero Inoxidable, Tornillos Carruaje Cuello Cuadrado,  
Rosca Corrida & Gruesa / UNC

### Model 3520



18-8 STAINLESS STEEL, SQUARE NECK ELEVATOR BOLTS,  
COARSE THREAD / UNC  
18-8 Acero Inoxidable, Tornillos Elevadores con Cuello  
Cuadrado, Rosca Gruesa / UNC

## Stainless Steel / Sockets

Acero Inoxidable / Tornillos Allen

### 3460 Model



18-8 STAINLESS STEEL, SOCKET HEAD CAP SCREWS,  
COARSE THREAD / UNC  
18-8 Acero Inoxidable, Tornillos Allen / Bristol,  
Cabeza Cilíndrica, Rosca Gruesa / UNC

### Model 3464



18-8 STAINLESS STEEL, SOCKET HEAD CAP  
SCREWS, FINE THREAD / UNF  
18-8 Acero Inoxidable, Tornillos Allen /  
Bristol, Cabeza Cilíndrica, Rosca Fina / UNF

### 3466 Model



18-8 STAINLESS STEEL, SOCKET BUTTON HEAD  
CAP SCREWS, COARSE THREAD / UNC  
18-8 Acero Inoxidable, Tornillos Allen /  
Bristol, Cabeza Botón, Rosca Gruesa / UNC

### Model 3467



18-8 STAINLESS STEEL, SOCKET BUTTON HEAD  
CAP SCREWS, FINE THREAD / UNF  
18-8 Acero Inoxidable, Tornillos Allen /  
Bristol, Cabeza Botón, Rosca Fina / UNF

### 3470 Model



18-8 STAINLESS STEEL, SOCKET FLAT HEAD CAP  
SCREWS, COARSE THREAD / UNC  
18-8 Acero Inoxidable, Tornillos Allen / Bristol,  
Cabeza Plana / Avellanada, Rosca Gruesa / UNC

### Model 3472



18-8 STAINLESS STEEL, SOCKET FLAT HEAD CAP  
SCREWS, FINE THREAD / UNF  
18-8 Acero Inoxidable, Tornillos Allen / Bristol,  
Cabeza Plana / Avellanada, Rosca Fina / UNF

### 3480 Model



18-8 STAINLESS STEEL, SOCKET SET SCREWS CUP  
POINT, COARSE THREAD / UNC  
18-8 Acero Inoxidable, Tornillos Prisioneros Allen /  
Bristol sin Cabeza / Opresores, Punta Copa,  
Rosca Gruesa / UNC

### Model 3482



18-8 STAINLESS STEEL, SOCKET SET SCREWS CUP  
POINT, FINE THREAD / UNF  
18-8 Acero Inoxidable, Tornillos Prisioneros Allen /  
Bristol sin Cabeza / Opresores, Punta Copa,  
Rosca Fina / UNF

## Stainless Steel / Sockets Acero Inoxidable / Tornillos Allen

### 3484 Model



18-8 STAINLESS STEEL, SQUARE HEAD SET SCREWS,  
COARSE THREAD / UNC  
18-8 Acero Inoxidable, Tornillos Prisioneros /  
Opresores Cuadrados, Rosca Gruesa / UNC

### Model 4760



A2 ( 304 ) STAINLESS STEEL, DIN 912 SOCKET  
HEAD CAP SCREWS  
A2 ( 304 ) Acero Inoxidable, Tornillos Allen /  
Bristol, Cabeza Cilindrica, DIN 912

### 4764 Model



A2 ( 304 ) STAINLESS STEEL, ISO 7380 SOCKET  
BUTTON HEAD CAP SCREWS  
A2 ( 304 ) Acero Inoxidable, Tornillos Allen /  
Bristol, Cabeza Botón, ISO 7380

### Model 4770



A2 ( 304 ) STAINLESS STEEL, DIN 7991 SOCKET FLAT  
HEAD CAP SCREWS  
A2 ( 304 ) Acero Inoxidable, Tornillos Allen / Bristol,  
Cabeza Plana / Avellanada, DIN 7991

### 4780 Model



A2 ( 304 ) STAINLESS STEEL, DIN 913 SOCKET SET  
SCREWS, FLAT POINT  
A2 ( 304 ) Acero Inoxidable, Tornillos Prisioneros Allen /  
Bristol sin Cabeza / Opresores, Punta Plana, DIN 913

### Model 4890



A4 ( 316 ) STAINLESS STEEL, DIN 912 SOCKET  
HEAD CAP SCREWS  
A4 ( 316 ) Acero Inoxidable, Tornillos Allen /  
Bristol, Cabeza Cilindrica, DIN 912

### 4894 Model



A4 ( 316 ) STAINLESS STEEL, DIN 7991 SOCKET  
FLAT HEAD CAP SCREWS  
A4 ( 316 ) Acero Inoxidable, Tornillos Allen /  
Bristol, Cabeza Plana / Avellanada, DIN 7991

### Model 4898



A4 ( 316 ) STAINLESS STEEL, DIN 913 SOCKET SET  
SCREWS, FLAT POINT  
A4 ( 316 ) Acero Inoxidable, Tornillos Prisioneros Allen /  
Bristol sin Cabeza / Opresores, Punta Plana, DIN 913

## Stainless Steel / Machine & Thumb Screws Acero Inoxidable / Tornillos Metales

### 3045 Model



18-8 STAINLESS STEEL, SHOULDERLESS THUMB  
SCREW, COARSE THREAD / UNC  
18-8 Acero Inoxidable, Tornillos Pulgar sin Hombro,  
Rosca Gruesa / UNC

### Model 3080



18-8 STAINLESS STEEL, INDENTED HEXAGON  
MACHINE SCREWS  
18-8 Acero Inoxidable, Tornillos Hexagonales  
Metales / Estufa

## Stainless Steel / Machine & Thumb Screws

Acero Inoxidable / Tornillos Metales

### 3090 Model



18-8 STAINLESS STEEL, SLOTTED FLAT HEAD  
MACHINE SCREWS  
18-8 Acero Inoxidable, Tornillos Metales /  
Estufa, Cabeza Plana / Avellanada, Ranura Standard

### Model 3100



18-8 STAINLESS STEEL, PHILLIPS FLAT HEAD  
MACHINE SCREWS  
18-8 Acero Inoxidable, Tornillos Metales /  
Estufa, Cabeza Plana / Avellanada, Ranura Phillips

### 3104 Model



18-8 STAINLESS STEEL, SQUARE DRIVE FLAT  
HEAD MACHINE SCREWS  
18-8 Acero Inoxidable, Tornillos Metales /  
Estufa, Cabeza Plana / Avellanada, Ranura Cuadrada

### Model 3107



18-8 STAINLESS STEEL, PHILLIPS FLAT HEAD  
UNDERCUT MACHINE SCREWS  
18-8 Acero Inoxidable, Tornillos Metales /  
Estufa, Cabeza Plana con Borde Bajo, Ranura Phillips

### 3113 Model



18-8 STAINLESS STEEL, SLOTTED ROUND HEAD  
MACHINE SCREWS  
18-8 Acero Inoxidable, Tornillos Metales /  
Estufa, Cabeza Redonda, Ranura Standard

### Model 3117



18-8 STAINLESS STEEL, PHILLIPS ROUND HEAD  
MACHINE SCREWS  
18-8 Acero Inoxidable, Tornillos Metales /  
Estufa, Cabeza Redonda, Ranura Phillips

### 3121 Model



18-8 STAINLESS STEEL, SLOTTED PAN HEAD  
MACHINE SCREWS  
18-8 Acero Inoxidable, Tornillos Metales /  
Estufa, Cabeza Pan, Ranura Standard

### Model 3130



18-8 STAINLESS STEEL, PHILLIPS PAN HEAD  
MACHINE SCREWS  
18-8 Acero Inoxidable, Tornillos Metales /  
Estufa, Cabeza Pan, Ranura Phillips

### 3136 Model



18-8 STAINLESS STEEL, SQUARE DRIVE PAN  
HEAD MACHINE SCREWS  
18-8 Acero Inoxidable, Tornillos Metales /  
Estufa, Cabeza Pan, Ranura Cuadrada

### Model 3141



18-8 STAINLESS STEEL, COMBO TRUSS HEAD  
MACHINE SCREWS  
18-8 Acero Inoxidable, Tornillos Metales /  
Estufa, Cabeza Gota de Sebo, Ranura Combinada

## Stainless Steel / Machine & Thumb Screws Acero Inoxidable / Tornillos Metales

### 3142 Model



18-8 STAINLESS STEEL, SLOTTED TRUSS HEAD  
MACHINE SCREWS  
18-8 Acero Inoxidable, Tornillos Metales /  
Estufa, Cabeza Gota de Sebo, Ranura Standard

### Model 3147



18-8 STAINLESS STEEL, PHILLIPS TRUSS HEAD  
MACHINE SCREWS  
18-8 Acero Inoxidable, Tornillos Metales /  
Estufa, Cabeza Gota de Sebo, Ranura Phillips

### 3155 Model



18-8 STAINLESS STEEL, COMBO SIDEWALK  
BOLTS, UNC  
18-8 Acero Inoxidable, Tornillos de Acera,  
Ranura Combinada

### Model 3170



18-8 STAINLESS STEEL, PHILLIPS OVAL HEAD  
MACHINE SCREWS  
18-8 Acero Inoxidable, Tornillos Metales / Estufa,  
Cabeza Ovalada, Ranura Phillips

### 3158 Model



18-8 STAINLESS STEEL, SLOTTED OVAL HEAD  
MACHINE SCREWS  
18-8 Acero Inoxidable, Tornillos Metales /  
Estufa, Cabeza Ovalada, Ranura Standard

### Model 3712



316 STAINLESS STEEL, PHILLIPS FLAT HEAD  
MACHINE SCREWS  
316 Acero Inoxidable, Tornillos Metales /  
Estufa, Cabeza Plana / Avellanada, Ranura Phillips

### 3172 Model



18-8 STAINLESS STEEL, SQUARE DRIVE OVAL  
HEAD MACHINE SCREWS  
18-8 Acero Inoxidable, Tornillos Metales /  
Estufa, Cabeza Ovalada, Ranura Cuadrada

### Model 4530



A2 ( 304 ) STAINLESS STEEL, DIN 963 SLOTTED FLAT  
HEAD MACHINE SCREWS  
A2 ( 304 ) Acero Inoxidable, Tornillos Metales / Estufa,  
Cabeza Plana / Avellanada, Ranura Standard, DIN 963

### 3715 Model



316 STAINLESS STEEL, PHILLIPS PAN HEAD  
MACHINE SCREWS  
316 Acero Inoxidable, Tornillos Metales /  
Estufa, Cabeza Pan, Ranura Phillips

### Model 4540



A2 ( 304 ) STAINLESS STEEL, DIN 84 SLOTTED  
CHEESE HEAD MACHINE SCREWS  
A2 ( 304 ) Acero Inoxidable, Tornillos Metales /  
Estufa, Cabeza Cilindrica, Ranura Standard, DIN 84

### 4535 Model



A2 ( 304 ) STAINLESS STEEL, DIN 965 PHILLIPS  
FLAT HEAD MACHINE SCREWS  
A2 ( 304 ) Acero Inoxidable, Tornillos Metales / Estufa,  
Cabeza Plana / Avellanada, Ranura Phillips, DIN 965

### Model 4548



A2 ( 304 ) STAINLESS STEEL, DIN 7985 PHILLIPS  
PAN HEAD MACHINE SCREWS  
A2 ( 304 ) Acero Inoxidable, Tornillos Metales /  
Estufa, Cabeza Pan, Ranura Phillips, DIN 7985



## Stainless Steel / Tapping Screws, Wood Screws & Lag Bolts

Acero Inoxidable / Tornillos Autorroscantes, Madera & Tirafondos

**3050** Model



18-8 STAINLESS STEEL, HEXAGON HEAD LAG BOLTS  
18-8 Acero Inoxidable, Tornillos Hexagonales Tirafondos

Model **3180**



18-8 STAINLESS STEEL, PHILLIPS FLAT HEAD SHEET METAL SCREWS, TYPE "A"  
18-8 Acero Inoxidable, Tornillos Autorroscantes / Lámina, Cabeza Plana / Avellanada, Ranura Phillips, Punta "A"

**3182** Model



18-8 STAINLESS STEEL, SQUARE FLAT HEAD SHEET METAL SCREWS, TYPE "A"  
18-8 Acero Inoxidable, Tornillos Autorroscantes / Lámina, Cabeza Plana / Avellanada, Ranura Cuadrada, Punta "A"

Model **3185**



305 STAINLESS STEEL, SQUARE DRIVE BUGLE HEAD DECK SCREWS  
305 Acero Inoxidable, Tornillos de Cubierta, Cabeza Plana / Avellanada, Ranura Cuadrada

**3187** Model



305 STAINLESS STEEL, SQUARE FLAT HEAD WITH "NIBS" DECK SCREWS  
305 Acero Inoxidable, Tornillos de Cubierta, Cabeza Plana / Avellanada, Ranura Cuadrada y Refuerzo de Agarre

Model **3190**



18-8 STAINLESS STEEL, SLOTTED PAN HEAD SHEET METAL SCREWS, TYPE "A"  
18-8 Acero Inoxidable, Tornillos Autorroscantes / Lámina, Cabeza Pan, Ranura Standard, Punta "A"

**3200** Model



18-8 STAINLESS STEEL, PHILLIPS PAN HEAD SHEET METAL SCREWS, TYPE "A"  
18-8 Acero Inoxidable, Tornillos Autorroscantes / Lámina, Cabeza Pan, Ranura Phillips, Tipo "A"

Model **3208**



18-8 STAINLESS STEEL, PHILLIPS PAN HEAD SHEET METAL SCREWS, TYPE "B"  
18-8 Acero Inoxidable, Tornillos Autorroscantes / Lámina, Cabeza Pan, Ranura Phillips, Punta "B"

**3212** Model



18-8 STAINLESS STEEL, SQUARE PAN HEAD SHEET METAL SCREWS, TYPE "A"  
18-8 Acero Inoxidable, Tornillos Autorroscantes / Lámina, Cabeza Pan, Ranura Cuadrada, Tipo "A"

Model **3217**



18-8 STAINLESS STEEL, SLOTTED TRUSS HEAD SHEET METAL SCREWS, TYPE "A"  
18-8 Acero Inoxidable, Tornillos Autorroscantes / Lámina, Cabeza de Gota, Ranura Standard, Tipo "A"

**3219** Model



18-8 STAINLESS STEEL, PHILLIPS TRUSS HEAD SHEET METAL SCREWS, TYPE "A"  
18-8 Acero Inoxidable, Tornillos Autorroscantes / Lámina, Cabeza Gota de Sebo, Ranura Phillips, Tipo "A"

Model **3228**



18-8 STAINLESS STEEL, DIN 912 SOCKET HEAD CAP, SHEET METAL SCREWS, TYPE "AB"  
18-8 Acero Inoxidable, Tornillos Autorroscantes / Lámina, Cabeza Cilíndrica, Din 912, Tipo "AB"

## Stainless Steel / Tapping Screws, Wood Screws & Lag Bolts

Acero Inoxidable / Tornillos Autorroscantes, Madera & Tirafondos

### 3236 Model



18-8 STAINLESS STEEL, SLOTTED OVAL HEAD SHEET METAL SCREWS, TYPE "A"  
18-8 Acero Inoxidable, Tornillos Autorroscantes / Lámina, Cabeza Ovalada, Ranura Standard, Tipo "A"

### Model 3240



18-8 STAINLESS STEEL, PHILLIPS OVAL HEAD SHEET METAL SCREWS, TYPE "A"  
18-8 Acero Inoxidable, Tornillos Autorroscantes / Lámina, Cabeza Ovalada, Ranura Phillips, Tipo "A"

### 3247 Model



18-8 STAINLESS STEEL, PHILLIPS OVAL HEAD SHEET METAL SCREWS, TYPE "B"  
18-8 Acero Inoxidable, Tornillos Autorroscantes / Lámina, Cabeza Ovalada, Ranura Phillips, Punta "B"

### Model 3250



18-8 STAINLESS STEEL, SQUARE OVAL HEAD SHEET METAL SCREWS, TYPE "A"  
18-8 Acero Inoxidable, Tornillos Autorroscantes / Lámina, Cabeza Ovalada, Ranura Cuadrada, Tipo "A"

### 3260 Model



18-8 STAINLESS STEEL, SLOTTED INDENTED HEXAGONAL WASHER SHEET METAL SCREWS, TYPE "A"  
18-8 Acero Inoxidable, Tornillos Autorroscantes / Lámina, Cabeza Hexagonal & Ranura Standard, Tipo "A"

### Model 3262



18-8 STAINLESS STEEL, UNSLOTTED INDENTED HEXAGON SHEET METAL SCREWS, TYPE "A"  
18-8 Acero Inoxidable, Tornillos Autorroscantes / Lámina, Cabeza Hexagonal, Sin Ranura, Tipo "A"

### 3268 Model



18-8 STAINLESS STEEL, SLOTTED FLAT HEAD WOOD SCREWS  
18-8 Acero Inoxidable, Tornillos para Madera, Cabeza Plana / Avellanada, Ranura Standard

### Model 3269



18-8 STAINLESS STEEL, PHILLIPS FLAT HEAD WOOD SCREWS  
18-8 Acero Inoxidable, Tornillos para Madera, Cabeza Plana / Avellanada, Ranura Phillips

### 3270 Model



18-8 STAINLESS STEEL, SLOTTED ROUND HEAD WOOD SCREWS  
18-8 Acero Inoxidable, Tornillos para Madera, Cabeza Redonda, Ranura Standard

### Model 3272



18-8 STAINLESS STEEL, SLOTTED OVAL HEAD WOOD SCREWS  
18-8 Acero Inoxidable, Tornillos para Madera, Cabeza Ovalada, Ranura Standard

### 3720 Model



316 STAINLESS STEEL, PHILLIPS FLAT HEAD SHEET METAL SCREWS, TYPE "A"  
316 Acero Inoxidable, Tornillos Autorroscantes / Lámina, Cabeza Plana / Avellanada, Ranura Phillips, Tipo "A"

### Model 3724



316 STAINLESS STEEL, PHILLIPS PAN HEAD SHEET METAL SCREWS, TYPE "A"  
316 Acero Inoxidable, Tornillos Autorroscantes / Lámina, Cabeza Pan / Ranura Phillips, Tipo "A"

## Stainless Steel / Self Drilling - Tek's Screws

Acero Inoxidable / Tornillos Autotaladrantes

### 3910 Model



410 STAINLESS STEEL, PHILLIPS FLAT HEAD  
SELF-DRILLING / TEKS SCREWS  
410 Acero Inoxidable, Tornillos Autotaladrantes /  
Punta Broca, Cabeza Plana / Avellanada, Ranura Phillips

### Model 3916



410 STAINLESS STEEL, PHILLIPS PAN HEAD  
SELF-DRILLING / TEKS SCREWS  
410 Acero Inoxidable, Tornillos Autotaladrantes /  
Punta Broca, Cabeza Pan, Ranura Phillips

### 3918 Model



410 STAINLESS STEEL, SQUARE PAN HEAD  
SELF-DRILLING / TEKS SCREWS  
410 Acero Inoxidable, Tornillos Autotaladrantes /  
Punta Broca, Cabeza Pan, Ranura Cuadrada

### Model 3920



410 STAINLESS STEEL, INDENTED HEXAGONAL  
WASHER SELF-DRILLING / TEKS SCREWS  
410 Acero Inoxidable, Tornillos Autotaladrantes /  
Punta Broca, Cabeza Hexagonal con Rondana / Arandela

### 3922 Model



410 SS HEXAGON WASHER HEAD SELF-DRILLING /  
TEKS SCREWS WITH SEALING WASHERS  
410 Acero Inoxidable, Tornillos Autotaladrantes /  
Punta Broca, Hexagonal con Rondana / Arandela Sellante

## Stainless Steel / Security Fasteners

Acero Inoxidable / Tornillos de Seguridad

### 3173 Model



18-8 STAINLESS STEEL, ONE WAY ROUND HEAD  
MACHINE SCREWS  
18-8 Acero Inoxidable, Tornillos Metales /  
Estufa de Seguridad, Cabeza Redonda, One Way

### Model 3175



18-8 STAINLESS STEEL, SNAKE EYES FLAT HEAD  
MACHINE SCREWS  
18-8 Acero Inoxidable, Tornillos Metales /  
Estufa, Cabeza Plana / Avellanada, Ojos de Culebra

### 3176 Model



18-8 STAINLESS STEEL, SNAKE EYES TRUSS HEAD  
MACHINE SCREWS  
18-8 Acero Inoxidable, Tornillos Metales / Estufa,  
Cabeza Gota de Sebo, Ojos de Culebra

### Model 3177



18-8 STAINLESS STEEL, 6-LOBE PIN-IN FLAT HEAD  
MACHINE SCREWS  
18-8 Acero Inoxidable, Tornillos Metales /  
Estufa, Cabeza Plana / Avellanada, Ranura Torx con Pin

## Stainless Steel / Security Fasteners Acero Inoxidable / Tornillos de Seguridad

### 3178 Model



18-8 STAINLESS STEEL, 6-LOBE PIN-IN BUTTON  
HEAD MACHINE SCREWS  
18-8 Acero Inoxidable, Tornillos Metales /  
Estufa, Cabeza Botón, Ranura Torx con Pin

### Model 3183



18-8 STAINLESS STEEL, 6-LOBE FLAT HEAD SHEET  
METAL SCREWS  
18-8 Acero Inoxidable, Tornillos Autorroscantes /  
Lámina, Cabeza Plana / Avellanada, Ranura Torx

### 3184 Model



18-8 STAINLESS STEEL, 6-LOBE PIN-IN FLAT HEAD  
SHEET METAL SCREWS  
18-8 Acero Inoxidable, Tornillos Autorroscantes /  
Lámina, Cabeza Plana / Avellanada, Ranura Torx con Pin

### Model 3214



18-8 STAINLESS STEEL, 6-LOBE PIN-IN BUTTON  
HEAD SHEET METAL SCREWS  
18-8 Acero Inoxidable, Tornillos Autorroscantes /  
Lámina, Cabeza Botón, Ranura Torx con Pin

### 3263 Model



18-8 STAINLESS STEEL, ONE WAY ROUND HEAD  
SHEET METAL SCREWS  
18-8 Acero Inoxidable, Tornillos Autorroscantes /  
Lámina de Seguridad, Cabeza Redonda, One Way

### Model 3266



18-8 STAINLESS STEEL, SNAKE EYES PAN HEAD  
SHEET METAL SCREWS  
18-8 Acero Inoxidable, Tornillos Autorroscantes /  
Lámina, Cabeza Pan, Ranura Ojos de Culebra

## Stainless Steel / Coupling, Flange & Hexagon Nuts Acero Inoxidable / Tuercas de Acoplamiento, Flange & Hexagonales

### 3300 Model



18-8 STAINLESS STEEL, FINISHED HEXAGON NUTS,  
COARSE THREAD / UNC  
18-8 Acero Inoxidable, Tuercas Hexagonales,  
Rosca Gruesa / UNC

### Model 3308



18-8 STAINLESS STEEL, FINISHED HEXAGON  
NUTS, FINE THREAD / UNF  
18-8 Acero Inoxidable, Tuercas Hexagonales,  
Rosca Fina / UNF

### 3312 Model



18-8 STAINLESS STEEL, HEXAGON MACHINE NUTS  
18-8 Acero Inoxidable, Tuercas Hexagonales  
para Metales / Estufa

### Model 3332



18-8 STAINLESS STEEL, HEXAGON COUPLING  
NUTS, COARSE THREAD / UNC  
18-8 Acero Inoxidable, Tuercas de Acoplamiento  
Hexagonales, Rosca Gruesa / UNC.

## Stainless Steel / Coupling, Flange & Hexagon Nuts

Acero Inoxidable / Tuercas de Acoplamiento, Flange & Hexagonales

### 3334 Model



18-8 STAINLESS STEEL, SERRATED FLANGE NUTS,  
COARSE THREAD / UNC  
18-8 Acero Inoxidable, Tuercas Hexagonales  
Tipo Flange, Rosca Gruesa / UNC

### Model 3338



18-8 STAINLESS STEEL, HEXAGON WELD NUTS,  
COARSE THREAD / UNC  
18-8 STAINLESS STEEL, HEXAGON WELD NUTS,  
COARSE THREAD / UNC

### 3730 Model



316 STAINLESS STEEL, FINISHED HEXAGON NUTS,  
COARSE THREAD / UNC  
316 Acero Inoxidable, Tuercas Hexagonales,  
Rosca Gruesa / UNC

### Model 3930



410 STAINLESS STEEL, FINISHED HEXAGON NUTS,  
COARSE THREAD / UNC  
410 Acero Inoxidable, Tuercas Hexagonales,  
Rosca Gruesa / UNC

### 4600 Model



A2 ( 304 ) STAINLESS STEEL, DIN 934 HEXAGON  
NUTS, COARSE THREAD  
A2 ( 304 ) Acero Inoxidable, Tuercas Hexagonales,  
DIN 934, Rosca Gruesa

### Model 4608



A2 ( 304 ) STAINLESS STEEL, DIN 934 HEXAGON  
NUTS, FINE THREAD  
A2 ( 304 ) Acero Inoxidable, Tuercas Hexagonales,  
DIN 934, Rosca Fina

### 4850 Model



A4 ( 316 ) STAINLESS STEEL, DIN 934 HEXAGON  
NUTS, COARSE THREAD  
A4 ( 316 ) Acero Inoxidable, Tuercas Hexagonales,  
DIN 934, Rosca Gruesa

## Stainless Steel / Lock, Wing & Cap Nuts

Acero Inoxidable / Tuercas de Seguridad, Mariposas & Ciegas

### 3340 Model



18-8 STAINLESS STEEL, NYLON INSERT LOCK NUTS,  
COARSE THREAD / UNC  
18-8 Acero Inoxidable, Tuercas de Seguridad  
con Nylon Insertado, Rosca Gruesa / UNC

### Model 3341



18-8 STAINLESS STEEL, THIN NYLON INSERT  
LOCK NUTS, COARSE THREAD / UNC  
18-8 Acero Inoxidable, Tuercas de Seguridad Bajas  
con Nylon Insertado, Rosca Gruesa / UNC.

## Stainless Steel / Lock, Wing & Cap Nuts

Acero Inoxidable / Tuercas de Seguridad, Mariposas & Ciegas

### 3344 Model



18-8 STAINLESS STEEL, NYLON INSERT LOCK NUTS, FINE THREAD / UNF  
18-8 Acero Inoxidable, Tuercas de Seguridad con Nylon Insertado, Rosca Fina / UNF

### Model 3345



18-8 STAINLESS STEEL, THIN NYLON INSERT LOCK NUTS, FINE THREAD / UNF  
18-8 Acero Inoxidable, Tuercas de Seguridad Bajas con Nylon Insertado, Rosca Fina / UNF

### 3347 Model



18-8 STAINLESS STEEL, TWO WAY ALL METAL LOCK NUTS, COARSE THREAD / UNC  
18-8 Acero Inoxidable, Tuercas de Seguridad Sin Teflon, Rosca Gruesa / UNC

### Model 3348



18-8 STAINLESS STEEL, KEP NUTS / LOCK NUTS WITH EXTERNAL WASHERS  
18-8 Acero Inoxidable, Tuercas de Seguridad con Rondanas / Arandelas Estrellas

### 3350 Model



18-8 STAINLESS STEEL, FORGED WING NUTS, COARSE THREAD / UNC  
18-8 Acero Inoxidable, Tuercas Mariposas Sólidas, Rosca Gruesa / UNC

### Model 3351



18-8 STAINLESS STEEL, FORGED WING NUTS, FINE THREAD / UNF  
18-8 Acero Inoxidable, Tuercas Mariposas Sólidas, Rosca Fina / UNF

### 3356 Model



18-8 STAINLESS STEEL, ACORN / DOMED CAP NUTS, COARSE THREAD / UNC  
18-8 Acero Inoxidable, Tuercas Ciegas, Rosca Gruesa / UNC

### Model 3358



18-8 STAINLESS STEEL, ACORN / DOMED CAP NUTS, FINE THREAD / UNF  
18-8 Acero Inoxidable, Tuercas Ciegas, Rosca Fina / UNF

### 3746 Model



316 STAINLESS STEEL, NYLON INSERT LOCK NUTS, COARSE THREAD / UNC  
316 Acero Inoxidable, Tuercas de Seguridad con Nylon Insertado, Rosca Gruesa / UNC

### Model 3748



316 STAINLESS STEEL, ACORN / DOMED CAP NUTS, COARSE THREAD / UN  
316 Acero Inoxidable, Tuercas Ciegas, Rosca Gruesa / UNC

### 4620 Model



A2 ( 304 ) STAINLESS STEEL, DIN 985 NYLON INSERT LOCK NUTS, COARSE THREAD  
A2 ( 304 ) Acero Inoxidable, Tuercas de Seguridad con Nylon Insertado, DIN 985, Rosca Gruesa

### Model 4622



A2 ( 304 ) STAINLESS STEEL, DIN 985 NYLON INSERT LOCK NUTS, FINE THREAD  
A2 ( 304 ) Acero Inoxidable, Tuercas de Seguridad con Nylon Insertado, DIN 985, Rosca Fina

## Stainless Steel / Lock, Wing & Cap Nuts

Acero Inoxidable / Tuercas de Seguridad, Mariposas & Ciegas

### 4627 Model



A2 ( 304 ) STAINLESS STEEL, DIN 980 PREVAILING NUTS, COARSE THREAD  
A2 ( 304 ) Acero Inoxidable, Tuercas de Seguridad sin Teflon, DIN 980, Rosca Gruesa

### Model 4630



A2 ( 304 ) STAINLESS STEEL, DIN 315 FORGED WING NUTS, COARSE THREAD  
A2 ( 304 ) Acero Inoxidable, Tuercas Mariposas Sólidas, DIN 315, Rosca Gruesa

### 4640 Model



A2 ( 304 ) STAINLESS STEEL, DIN 1587 ACORN / DOMED CAP NUTS, COARSE THREAD  
A2 ( 304 ) Acero Inoxidable, Tuercas Ciegas, DIN 1587, Rosca Gruesa

## Stainless Steel / Heavy, Jam & Structural Nuts

Acero Inoxidable / Tuercas Pesadas, Bajas & Estructurales

### 3316 Model



18-8 STAINLESS STEEL, FINISHED HEXAGON JAM NUTS, COARSE THREAD / UNC  
18-8 Acero Inoxidable, Tuercas Hexagonales Bajas, Rosca Gruesa / UNC

### Model 3320



18-8 STAINLESS STEEL, HEAVY HEXAGON NUTS, COARSE THREAD / UNC  
18-8 Acero Inoxidable, Tuercas Hexagonales Pesadas / Estructurales, Rosca Gruesa / UNC

### 3324 Model



304 STAINLESS STEEL, HEAVY HEXAGON NUTS, ASTM A194 B8  
304 Acero Inoxidable, Tuercas Hexagonales Pesadas / Estructurales, Norma ASTM A194 B8

### Model 3328



18-8 STAINLESS STEEL, HEAVY HEXAGON JAM NUTS, Coarse Thread / UNC  
18-8 Acero Inoxidable, Tuercas Hexagonales Pesadas / Estructurales Bajas, Rosca Gruesa / UNC

### 3740 Model



316 STAINLESS STEEL, HEAVY HEXAGON NUTS, COARSE THREAD / UNC  
316 Acero Inoxidable, Tuercas Hexagonales Pesadas / Estructurales, Rosca Gruesa / UNC

### Model 3744



316 STAINLESS STEEL, HEAVY HEXAGON NUTS, ASTM A194 B8M  
316 Acero Inoxidable, Tuercas Hexagonales Pesadas / Estructurales, Norma ASTM A194 B8M

## Stainless Steel / Square, Tee & Slotted Nuts

Acero Inoxidable / Tuercas Cuadradas, Tipo "T" & Ranuradas

### 3362 Model



18-8 STAINLESS STEEL, SQUARE NUTS,  
COARSE THREAD / UNC  
18-8 Acero Inoxidable, Tuercas Cuadradas,  
Rosca Gruesa / UNC

### Model 3368



18-8 STAINLESS STEEL, TEE NUTS WITH PRONGS,  
COARSE THREAD / UNC  
18-8 Acero Inoxidable, Tuercas de Anclaje,  
Rosca Gruesa / UNC

### 3369 Model



18-8 STAINLESS STEEL, ROUND BASE BRAD  
HOLE TEE NUTS, COARSE THREAD / UNC  
18-8 Acero Inoxidable, Tuercas de Anclaje  
sin Puntas, Rosca Gruesa / UNC

### Model 3374



18-8 STAINLESS STEEL, CASTLE NUTS,  
COARSE THREAD / UNC  
18-8 Acero Inoxidable, Tuercas Castillo,  
Rosca Gruesa / UNC

### 3378 Model



18-8 STAINLESS STEEL, SLOTTED HEAVY  
HEXAGON NUTS, COARSE THREAD / UNC  
18-8 Acero Inoxidable, Tuercas Hexagonales  
Pesadas Ranuradas, Rosca Gruesa / UNC

## Stainless Steel / Washers

Acero Inoxidable / Arandelas

### 3400 Model



18-8 STAINLESS STEEL, COMMERCIAL PATTERN  
FLAT WASHERS  
18-8 Acero Inoxidable, Rondanas / Arandelas  
Planas, Modelo Comercial

### Model 3408



18-8 STAINLESS STEEL, SPECIAL DIMENSIONS  
FLAT WASHERS  
18-8 Acero Inoxidable, Rondanas / Arandelas  
Planas con Dimensiones Especiales

### 3410 Model



18-8 STAINLESS STEEL, FENDER WASHERS  
18-8 Acero Inoxidable, Rondanas /  
Arandelas Defensas / Extra Anchas

### Model 3416



18-8 STAINLESS STEEL & NEOPRENE, SEALING /  
BONDED WASHERS  
18-8 Acero Inoxidable, Rondanas / Arandelas  
Planas con Neopropeno / Sellantes



## Stainless Steel / Washers

Acero Inoxidable / Arandelas

### 3420 Model



18-8 STAINLESS STEEL, MEDIUM SPLIT  
LOCK WASHERS  
18-8 Acero Inoxidable, Rondanas /  
Arandelas de Presión

### Model 3424



410 STAINLESS STEEL, EXTERNAL TOOTH  
LOCK WASHERS  
410 Acero Inoxidable, Rondanas / Arandelas  
Externales / Tipo Estrella Externa

### 3426 Model



410 STAINLESS STEEL, INTERNAL TOOTH  
LOCK WASHERS  
410 Acero Inoxidable, Rondanas /  
Arandelas Externales / Tipo Estrella Interna

### Model 3430



18-8 STAINLESS STEEL, FINISH / CUP WASHERS  
18-8 Acero Inoxidable, Rondanas /  
Arandelas Cónicas / Ovalillos / Ojos de Perdiz

### 3431 Model



18-8 STAINLESS STEEL, FINISH /  
CUP FLANGED WASHERS  
18-8 Acero Inoxidable, Rondanas /  
Arandelas Cónicas / Ovalillos con Flange

### Model 3750



316 STAINLESS STEEL, COMMERCIAL PATTERN  
FLAT WASHERS  
316 Acero Inoxidable, Rondanas /  
Arandelas Planas / Modelo Comercial

### 3754 Model



316 STAINLESS STEEL, FENDER WASHERS  
316 Acero Inoxidable, Ronda  
Arandelas Defensas / Extra Anchas

### Model 3756



316 STAINLESS STEEL, MEDIUM SPLIT  
LOCK WASHERS  
316 Acero Inoxidable, Rondanas /  
Arandelas de Presión

### 3940 Model



410 STAINLESS STEEL, FLAT WASHERS  
410 Acero Inoxidable, Rondanas /  
Arandelas Planas

### Model 3950



410 STAINLESS STEEL, MEDIUM SPLIT  
LOCK WASHERS  
410 Acero Inoxidable, Rondanas /  
Arandelas de Presión

### 4700 Model



A2 ( 304 ) STAINLESS STEEL, DIN 125-A  
FLAT WASHERS  
A2 ( 304 ) Acero Inoxidable, Rondanas /  
Arandelas Planas, DIN 125-A

### Model 4720



A2 ( 304 ) STAINLESS STEEL, DIN 127-B  
MEDIUM SPLIT LOCK WASHERS  
A2 ( 304 ) Acero Inoxidable, Rondanas /  
Arandelas de Presión, DIN 127-B

## Stainless Steel / Washers Acero Inoxidable / Arandelas

### 4860 Model



A4 ( 316 ) STAINLESS STEEL, DIN 125-A  
FLAT WASHERS  
A4 (316) Acero Inoxidable, Rondanas /  
Arandelas Planas, DIN 125-A

### Model 4864



A4 ( 316 ) STAINLESS STEEL, DIN 127-B  
MEDIUM SPLIT LOCK WASHERS  
A4 (316) Acero Inoxidable, Rondanas /  
Arandelas de Presión, DIN 127-B

## Stainless Steel / Cotter & Spring Pins Acero Inoxidable / Cupillas & Pasadores de Presión

### 3434 Model



18-8 STAINLESS STEEL, EXTENDED PRONG COTTER PINS  
18-8 Acero Inoxidable, Cupillas / Chavetas

### Model 3488



410 STAINLESS STEEL, SPRING PINS  
410 Acero Inoxidable, Pasadores de Presión

## Stainless Steel / Threaded Rods, Studs & Hanger Bolts Acero Inoxidable / Barras Roscadas & Espárragos

### 3440 Model



18-8 STAINLESS STEEL, FULL THREADED RODS  
3 FEET LENGTH, COARSE THREAD / UNC  
18-8 Acero Inoxidable, Barras / Varillas Roscadas  
3 Pies de Longitud, Rosca Gruesa / UNC

### Model 3442



18-8 STAINLESS STEEL, FULL THREADED RODS  
3 FEET LENGTH, FINE THREAD / UNF  
18-8 Acero Inoxidable, Barras / Varillas Roscadas  
3 Pies de Longitud, Rosca Fina / UNF

### 3446 Model



18-8 STAINLESS STEEL, FULL THREADED RODS  
6 FEET LENGTH, COARSE THREAD / UNC  
18-8 Acero Inoxidable, Barras / Varillas Roscadas  
6 Pies de Longitud, Rosca Gruesa / UNC

### Model 3448



304 STAINLESS STEEL, FULL THREADED RODS  
6 FEET LENGTH, ASTM A193 B8  
304 Acero Inoxidable, Barras / Varillas Roscadas  
6 Pies de Longitud, Norma ASTM 193 B8

## Stainless Steel / Threaded Rods, Studs & Hanger Bolts

Acero Inoxidable / Barras Roscadas & Espárragos

### 3452 Model



304 STAINLESS STEEL, FULL THREADED STUDS,  
ASTM A193 B8  
304 Acero Inoxidable, Espárragos Totalmente  
Roscados / Norma ASTM A193 B8

### Model 3454



18-8 STAINLESS STEEL, DOUBLE END STUDS,  
COARSE THREAD / UNC  
18-8 Acero Inoxidable, Espárragos /  
Rosca Parcial & Gruesa / UNC

### 3457 Model



18-8 STAINLESS STEEL, HANGER BOLTS  
18-8 Acero Inoxidable, Espárragos Patas  
de Muebles / Tirafondos - Rosca Gruesa

### Model 3760



316 STAINLESS STEEL, FULL THREADED RODS  
3 FEET LENGTH, COARSE THREAD / UNC  
316 Acero Inoxidable, Barras / Varillas Roscadas  
3 Pies de Longitud, Rosca Gruesa / UNC

### 3770 Model



316 STAINLESS STEEL, FULL THREADED RODS  
6 FEET LENGTH, COARSE THREAD / UNC  
316 Acero Inoxidable, Barras / Varillas Roscadas  
6 Pies de Longitud, Rosca Gruesa / UNC

### Model 3774



316 STAINLESS STEEL, FULL THREADED RODS  
6 FEET LENGTH, ASTM A193 B8M  
316 Acero Inoxidable, Barras / Varillas Roscadas  
6 Pies de Longitud, Norma ASTM 193 B8M

### 3780 Model



316 STAINLESS STEEL, FULL THREADED STUDS,  
ASTM A193 B8M  
316 Acero Inoxidable, Espárragos Totalmente  
Roscados / Norma ASTM A193 B8M

### Model 4750



A2 ( 304 ) STAINLESS STEEL, DIN 976 FULL  
THREADED RODS, 1 METER LENGTH  
A2 ( 304 ) Acero Inoxidable, Barras /  
Varillas Roscadas 1 Metro de Longitud, DIN 976

### 4870 Model



A4 ( 316 ) STAINLESS STEEL, DIN 976 FULL  
THREADED RODS, 1 METER LENGTH  
A4 ( 316 ) Acero Inoxidable, Barras /  
Varillas Roscadas 1 Metro de Longitud, DIN 976

## Stainless Steel / Anchoring, Rivets & Nails

Acero Inoxidable / Anclajes, Remaches & Clavos

### 3494 Model



304 STAINLESS STEEL, WEDGE ANCHORS  
304 Acero Inoxidable, Taquetes / Anclajes Concreto

### Model 3495



304 STAINLESS STEEL, SLEEVE ANCHORS  
304 Acero Inoxidable, Taquetes /  
Anclajes Camisa de Expansión con Tuercas

### 3496 Model



304 STAINLESS STEEL, DROP-IN ANCHORS  
304 Acero Inoxidable, Taquetes / Anclajes Drop-In

### Model 3498



304 STAINLESS STEEL, PHILLIPS FLAT HEAD  
SLEEVE ANCHORS  
304 Acero Inoxidable, Taquetes / Anclajes Camisa  
de Expansión, Cabeza Plana / Avellanada, Ranura Phillips

### 4785 Model



304 ALL STAINLESS STEEL, OPEN TYPE,  
DOME HEAD RIVETS  
304 Acero Inoxidable, Remaches Ciegos, Punta Abierta

### Model 0860



304 STAINLESS STEEL, RING SHANK SIDING NAILS  
304 Acero Inoxidable, Taquetes / Clavos de Cuerpo  
Anillado

## Monel / Fasteners

Monel / Tornillería

### 3970 Model



MONEL 400, HEXAGON HEAD CAP SCREWS,  
COARSE THREAD / UNC  
Monel 400, Tornillos Hexagonales,  
Rosca Gruesa / UNC

### Model 3980



MONEL 400, FINISHED HEXAGON NUTS,  
COARSE THREAD / UNC  
Monel 400, Tuercas Hexagonales, Rosca  
Gruesa / UNC

## Brass / Fasteners

Latón / Tornillería

### 4000 Model



BRASS, HEXAGON HEAD CAP SCREWS,  
COARSE THREAD / UNC  
Latón, Tornillos Hexagonales, Rosca Gruesa / UNC

### Model 4010



BRASS, SLOTTED FLAT HEAD MACHINE SCREWS,  
COARSE THREAD / UNC  
Latón, Tornillos Metales / Estufa, Cabeza Plana /  
Avellanada, Ranura Standard, Rosca Gruesa / UNC

### 4011 Model



BRASS, SLOTTED FLAT HEAD MACHINE SCREWS,  
FINE THREAD / UNF  
Latón, Tornillos Metales / Estufa, Cabeza Plana /  
Avellanada, Ranura Standard, Rosca Fina / UNF

### Model 4014



BRASS, PHILLIPS FLAT HEAD MACHINE SCREWS,  
COARSE THREAD / UNC  
Latón, Tornillos Metales / Estufa, Cabeza Plana /  
Avellanada, Ranura Phillips, Rosca Gruesa / UNC

### 4020 Model



BRASS, SLOTTED ROUND HEAD MACHINE SCREWS  
Latón, Tornillos Metales / Estufa, Cabeza Redonda,  
Ranura Standard

### Model 4030



BRASS, SLOTTED FLAT HEAD WOOD SCREWS  
Latón, Tornillos para Madera, Cabeza Plana /  
Avellanada, Ranura Standard

### 4032 Model



BRASS, PHILLIPS FLAT HEAD WOOD SCREWS  
Latón, Tornillos para Madera, Cabeza Plana /  
Avellanada, Ranura Phillips

### Model 4034



BRASS, SLOTTED ROUND HEAD WOOD SCREWS  
Latón, Tornillos para Madera, Cabeza Redonda,  
Ranura Standard

### 4035 Model



BRASS, SLOTTED OVAL HEAD WOOD SCREWS  
Latón, Tornillos para Madera, Cabeza Ovalada,  
Ranura Standard

### Model 4045



BRASS, FINISHED HEXAGON NUTS,  
COARSE THREAD / UNC  
Latón, Tuercas Hexagonales,  
Rosca Gruesa / UNC

### 4046 Model



BRASS, FINISHED HEXAGON NUTS,  
FINE THREAD / UNF  
Latón, Tuercas Hexagonales, Rosca Fina / UNF

### Model 4050



BRASS, HEXAGON MACHINE NUTS,  
COARSE THREAD / UNC  
Latón, Tuercas Hexagonales para Metales /  
Estufa, Rosca Gruesa / UNC

## Brass / Fasteners

Latón / Tornillería

### 4054 Model



BRASS, FINISHED HEXAGON JAM NUTS,  
COARSE THREAD / UNC  
Latón, Tuercas Hexagonales Bajas, Rosca  
Gruesa / UNC

### Model 4056



BRASS, HEAVY HEXAGON NUTS,  
COARSE THREAD / UNC  
Latón, Tuercas Hexagonales Pesadas,  
Rosca Gruesa / UNC

### 4057 Model



BRASS, HEAVY HEXAGON JAM NUTS,  
COARSE THREAD / UNC  
Latón, Tuercas Hexagonales Pesadas Bajas,  
Rosca Gruesa / UNC

### Model 4060



BRASS, NYLON INSERT LOCK NUTS, COARSE  
THREAD / UNC  
Latón, Tuercas de Seguridad con Nylon Insertado,  
Rosca Gruesa / UNC

### 4070 Model



BRASS, FORGED WING NUTS,  
COARSE THREAD / UNC  
Latón, Tuercas Mariposas Sólidas,  
Rosca Gruesa / UNC

### Model 4080



BRASS, ACORN / DOMED CAP NUTS,  
COARSE THREAD / UNC  
Latón, Tuercas Ciegas, Rosca Gruesa / UNC

### 4090 Model



BRASS, SQUARE NUTS, COARSE THREAD / UNC  
Latón, Tuercas Cuadradas, Rosca Gruesa / UNC

### Model 4100



BRASS, COMMERCIAL PATTERN FLAT WASHERS  
Latón, Rondanas / Arandelas Planas /  
Modelo Comercial

### 4116 Model



BRASS, FINISH / CUP WASHERS  
Latón, Rondanas / Arandelas Cónicas /  
Ovalillos / Ojos de Perdiz

### Model 4120



BRASS, EXTENDED PRONG COTTER PINS  
Latón, Cupillas / Chavetas

### 4150 Model



BRASS, FULL THREADED RODS 3 FEET LENGTH,  
COARSE THREAD / UNC  
Latón, Barras / Varillas Roscadas 3 Pies de Longitud,  
Rosca Gruesa / UNC

### Model 4180



BRASS, THREADED INSERTS FOR WOODS,  
COARSE THREAD / UNC  
Latón, Insertos para Maderas, Rosca Gruesa / UNC

## Silicon Bronze / Fasteners

Bronce Silicio / Tornillería

### 4200 Model



SILICON BRONZE 651, HEXAGON HEAD CAP SCREWS FULL THREAD, COARSE THREAD / UNC  
Bronce Silicio 651, Tornillos Hexagonales Rosca Corrida, Rosca Gruesa / UNC

### Model 4204



SILICON BRONZE 651, SQUARE NECK CARRIAGE BOLTS, COARSE THREAD / UNC  
Bronce Silicio 651, Tornillos Carruaje Cuello Cuadrado, Rosca Gruesa / UNC

### 4212 Model



SILICON BRONZE 651, SLOTTED FLAT HEAD WOOD SCREWS  
Bronce Silicio 651, Tornillos para Madera, Cabeza Plana / Avellanada, Ranura Standard

### Model 4215



SILICON BRONZE, FREARSON FLAT HEAD WOOD SCREWS  
Bronce Silicio 651, Tornillos para Madera, Cabeza Plana / Avellanada, Ranura Phillips

### 4216 Model



SILICON BRONZE 651, SQUARE DRIVE FLAT HEAD WOOD SCREWS  
Bronce Silicio 651, Tornillos para Madera, Cabeza Plana / Avellanada, Ranura Cuadrada

### Model 4220



SILICON BRONZE 651, FINISHED HEXAGON NUTS, COARSE THREAD / UNC  
Bronce Silicio 651, Tuercas Hexagonales, Rosca Gruesa / UNC

### 4230 Model



SILICON BRONZE 651, FLAT WASHERS  
Bronce Silicio 651, Rondanas / Arandelas Planas

### Model 4240



SILICON BRONZE 651, MEDIUM SPLIT LOCK WASHERS  
Bronce Silicio 651, Rondanas / Arandelas de Presión

### 4246 Model



SILICON BRONZE 651, EXTENDED PRONG COTTER PINS  
Bronce Silicio 651, Cupillas / Chavetas

### Model 4250



SILICON BRONZE 651, FULL THREADED RODS 3 FEET LENGHT, COARSE THREAD / UNC  
Bronce Silicio 651, Barras / Varillas Roscadas 3 Pies De Longitud, Rosca Gruesa / UNC

### 4320 Model



SILICON BRONZE 651, SOCKET HEAD CAP SCREWS, COARSE THREAD / UNC  
Bronce Silicio 651, Tornillos Allen / Bristol, Cabeza Cilíndrica, Rosca Gruesa / UNC

# HOW TO BUILD OUR PART NUMBERS

Cómo construir nuestro Número de Parte

**Part Numbers are usually composed by 3 parts.**  
**The primary 4 numbers describe the model, the second 3 are the diameter & the last 3 are length**  
 Nuestros Códigos están usualmente compuestos por 3 partes.  
 Los primeros 4 números describen el modelo, los segundos 3 son el diámetro y los últimos 3 son la longitud.

## FOR METRIC FASTENERS

Para Tornillería Métrica

### DIAMETER / Diámetro

Sizes Medidas	Pitch Rosca	Codes Códigos
M2	0.40 Coarse	020
M3	0.50 Coarse	030
M4	0.70 Coarse	040
M5	0.80 Coarse	050
M6	1.00 Coarse	060
M8	1.25 Coarse	080
M10	1.50 Coarse 1.25 Fine	100
M12	1.75 Coarse 1.25 Fine	120
M14	2.00 Coarse 1.50 Fine	140
M16	2.00 Coarse 1.50 Fine	160
M18	2.50 Coarse 1.50 Fine	180
M20	2.50 Coarse 2.00 Fine	200
M22	2.50 Coarse 2.00 Fine	220
M24	3.00 Coarse 2.00 Fine	240
M27	3.00 Coarse 2.00 Fine	270
M30	3.50 Coarse 2.00 Fine	300
M33	3.50 Coarse 2.00 Fine	330
M36	4.00 Coarse 3.00 Fine	360
M39	4.00 Coarse 3.00 Fine	390
M42	4.50 Coarse 4.00 Fine	420
M48	5.00 Coarse 4.00 Fine	480
M52	5.00 Coarse 4.00 Fine	520

### EXAMPLES / Ejemplos:

### LENGTH / Longitud

Sizes Medidas	Codes Códigos
4 mm	004
6 mm	006
8 mm	008
10 mm	010
12 mm	012
14 mm	014
16 mm	016
18 mm	018
20 mm	020
22 mm	022
25 mm	025
30 mm	030
35 mm	035
40 mm	040
45 mm	045
50 mm	050
55 mm	055
60 mm	060
65 mm	065
70 mm	070
75 mm	075
80 mm	080
85 mm	085
90 mm	090
100 mm	100
110 mm	110
120 mm	120
130 mm	130
140 mm	140
150 mm	150
160 mm	160
170 mm	170
180 mm	180
200 mm	200
220 mm	220
230 mm	230
240 mm	240
250 mm	250

#### FOR BOLTS OR SCREWS / PARA TORNILLOS

SS A2 DIN 912 SOCKET CAP SCREWS \* M6-1.00 X 10  
 TORNILLOS ALLEN C/CIL, ACERO INOXIDABLE A2 \* M6-1.00 X 10

**4760-060010**  
 Model Code      Diameter Code      Length Code

#### FOR NUTS / PARA TUERCAS

SS A2 DIN 934 HEXAGON NUTS \* M12-1.75  
 TUERCAS HEXAGONALES DIN 934 ACERO INOXIDABLE A2 \* M12-1.75

**4600-120000**  
 Model Code      Diameter Code      N/A

#### FOR WASHERS / PARA ARANDELAS

SS A2 DIN 125 FLAT WASHERS \* M20  
 ARANDELAS PLANAS ACERO INOXIDABLE A2 \* M20

**4700-200000**  
 Model Code      Diameter Code      N/A

#### FOR THREADED RODS / PARA BARRAS ROSCADAS

SS A2 DIN 976 THREADED RODS \* M6-1.00 X 1 METER  
 BARRAS ROSCADAS DIN 976 ACERO INOXIDABLE A2 \* M6-1.00 X 1 METRO

**4750-060000**  
 Model Code      Diameter Code      N/A



## FOR IMPERIAL FASTENERS / Para Tornillería Imperial

### DIAMETER / Diámetro

Sizes Medidas	Threads per Inch Hilos por Pulgada	Codes Códigos
No. 2	56 UNC	020
No. 4	40 UNC	028
No. 5	40 UNC	030
No. 6	32 UNC	035
No. 8	32 UNC	040
No. 10	24 UNC	050
No. 10	32 UNF	051
No. 12	24 UNC	055
1/4"	20 UNC 28 UNF	060
5/16"	18 UNC 24 UNF	080
3/8"	16 UNC 24 UNF	100
7/16"	14 UNC 20 UNF	110
1/2"	13 UNC 20 UNF	130
9/16"	12 UNC 18 UNF	140
5/8"	11 UNC 18 UNF	160
3/4"	10 UNC 16 UNF	190
7/8"	9 UNC 14 UNF	220
1"	8 UNC 14 UNS	250
1-1/8"	7 UNC 12 UNF	290
1-1/4"	7 UNC 12 UNF	320
1-3/8"	6 UNC 12 UNF	350
1-1/2"	6 UNC 12 UNF	380
1-3/4"	5 UNC	440
2"	4-1/2 UNC	510
2-1/4"	4-1/2 UNC	570
2-1/2"	4 UNC	640
2-3/4"	4 UNC	700
3"	4 UNC	760
3-1/4"	4 UNC	830
3-1/2"	4 UNC	890
3-3/4"	4 UNC	950
4"	4 UNC	990

### EXAMPLES / Ejemplos:

**FOR BOLTS OR SCREWS / PARA TORNILLOS**  
18-8 SS HEXAGON HEAD CAP SCREWS UNC \* 1/2-13 X 2"  
TORNILLOS HEXAGONALES UNC ACERO INOXIDABLE 18-8 \* 1/2-13 X 2"

**3000-130051**  
Model Code    Diameter Code    Length Code

**FOR NUTS / PARA TUERCAS**  
18-8 SS SERRATED FLANGE NUTS \* 3/8-16  
TUERCAS TIPO FLANGE ACERO INOXIDABLE 18-8 \* 3/8-16

**3334-100000**  
Model Code    Diameter Code    N/A

**FOR WASHERS / PARA ARANDELAS**  
18-8 SS SPLIT LOCK WASHERS \* 1/4  
ARANDELAS DE PRESION ACERO INOXIDABLE 18-8 \* 1/4

**3420-060000**  
Model Code    Diameter Code    N/A

**FOR THREADED RODS / PARA BARRAS ROSCADAS**  
SS 304 FULL THREADED RODS UNC \* 5/8-11 X 6"  
BARRAS ROSCADAS UNC ACERO INOXIDABLE 18-8 \* 5/8-11 X 6"

**3446-160000**  
Model Code    Diameter Code    N/A

**FOR SELF-TAPPING / PARA AUTORROSCANTES**  
SS 18.8 PHIL FLAT HEAD S/M/S \* 10 X 3-1/2  
AUTORROSCANTES C/PLANA ACERO INOXIDABLE 18-8 \* 10 X 3-1/2

**3180-010089**  
Model Code    Diameter Code    Length Code

**CODES ACCORDING TO SHEET METAL SCREWS DIAMETER**  
CÓDIGOS DE AUTORROSCANTES SEGÚN SU DIÁMETRO

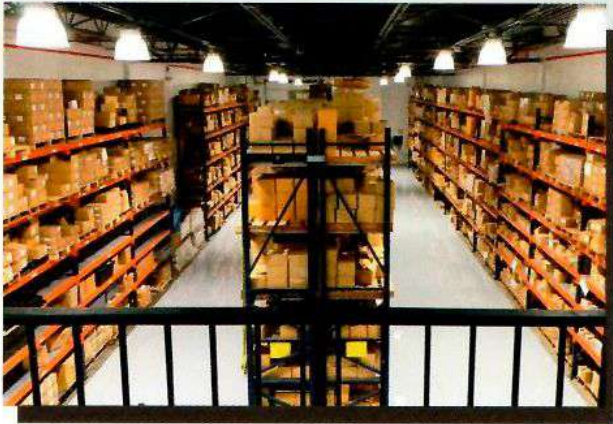
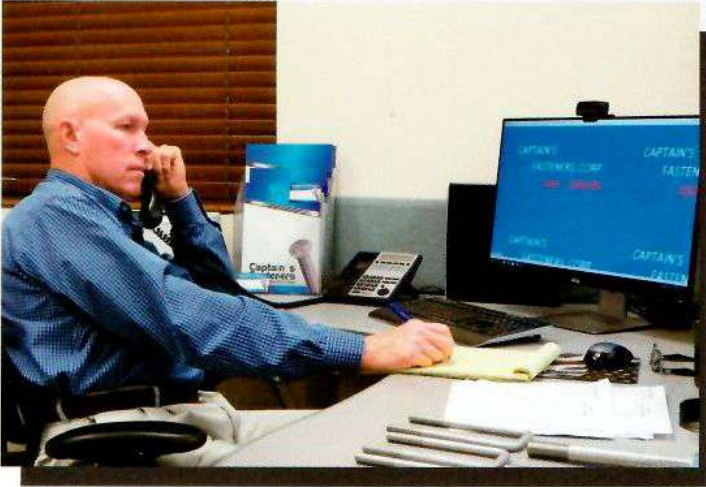
Diameter Diámetro	Codes Códigos
# 4	004
# 6	006
# 8	008
# 10	010
# 12	012
# 14	014

### LENGTH / Longitud

Sizes Medidas	Codes Códigos
1/8	003
3/16	005
1/4	006
5/16	008
3/8	010
1/2	013
5/8	016
3/4	019
7/8	022
1"	025
1-1/8"	029
1-1/4"	032
1-1/2"	038
1-5/8"	041
1-3/4"	044
2"	051
2-1/8"	054
2-1/4"	057
2-1/2"	064
2-3/4"	070
3"	076
3-1/4"	083
3-1/2"	089
3-3/4"	095
4"	102
4-1/2"	114
5"	127
5-1/2"	140
6"	152
6-1/2"	165
7"	178
7-1/2"	191
8"	203
8-1/2"	216
9"	229
9-1/2"	241
10"	254
10-1/2"	267
11"	279
12"	305
13"	330
14"	356
15"	381
16"	406
17"	432
18"	457
20"	508



Gallery / Galería





***CAPTAIN'S FASTENERS CORP.***

3706 SW 30th Ave., Fort Lauderdale, Florida 33312 USA Phone: +1 (954) 533-9259 Fax: +1 (954) 241.5156  
E-mail: [info@captainsfasteners.com](mailto:info@captainsfasteners.com) / Web Site: [www.captainsfasteners.com](http://www.captainsfasteners.com)